



# Hotel & Resort Supply

## Company Presentation



# Shared Expertise

to serve all customer's needs



Cosmopolitan was established in 2002 and is a dedicated Food & Beverage supplier operating in the Maldives.



Wrist Group' expertise of more than 50 years in the Ship Supply Industry has expanded to the Hotel & Resort Business, supplying to the most remote or nearby locations around the world.

## Hotel & Resort Supply

Commitment

Quality Assurance

Efficiency

Customer Focus

High Service Level

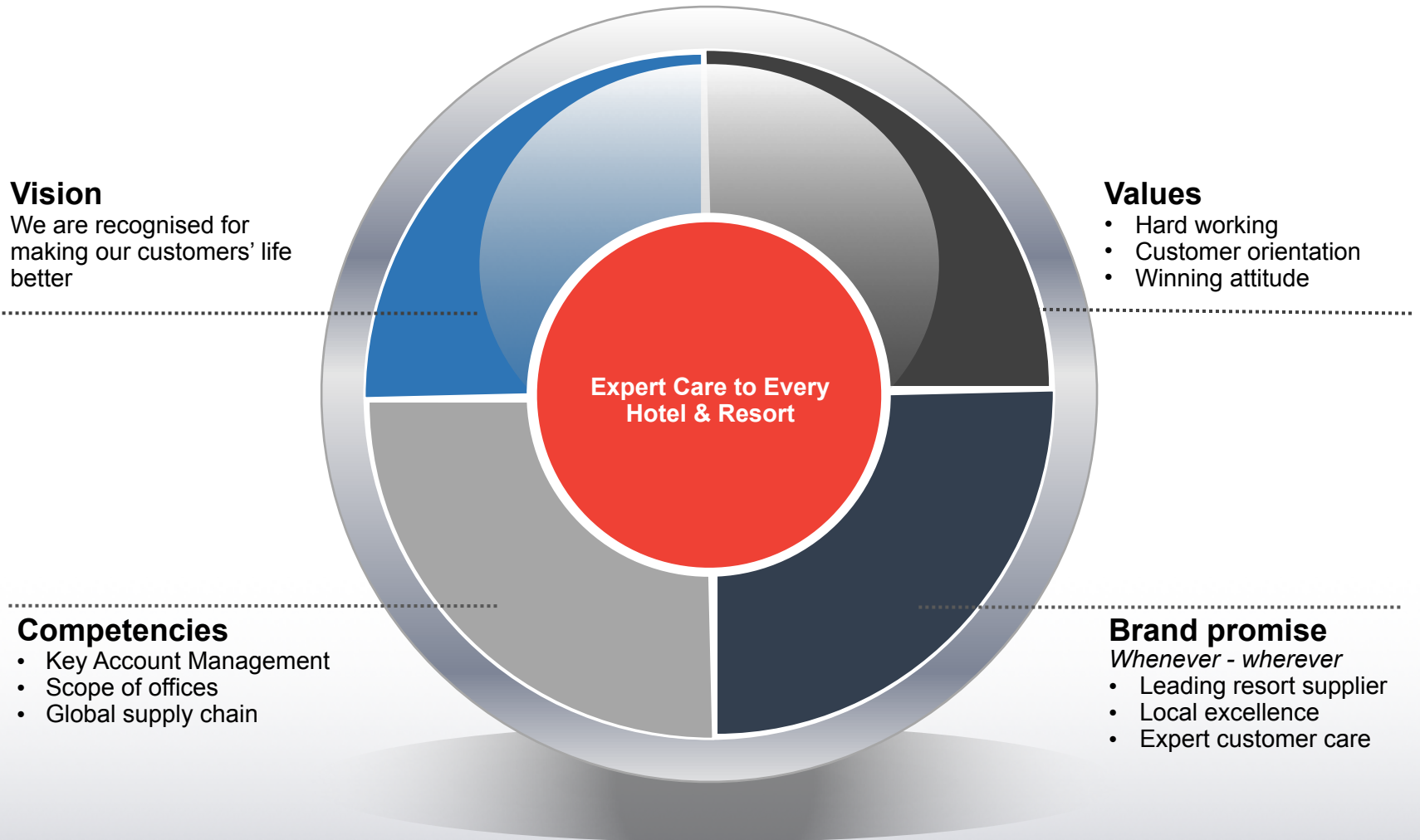
Experienced Suppliers

Single point of contact

Knowhow

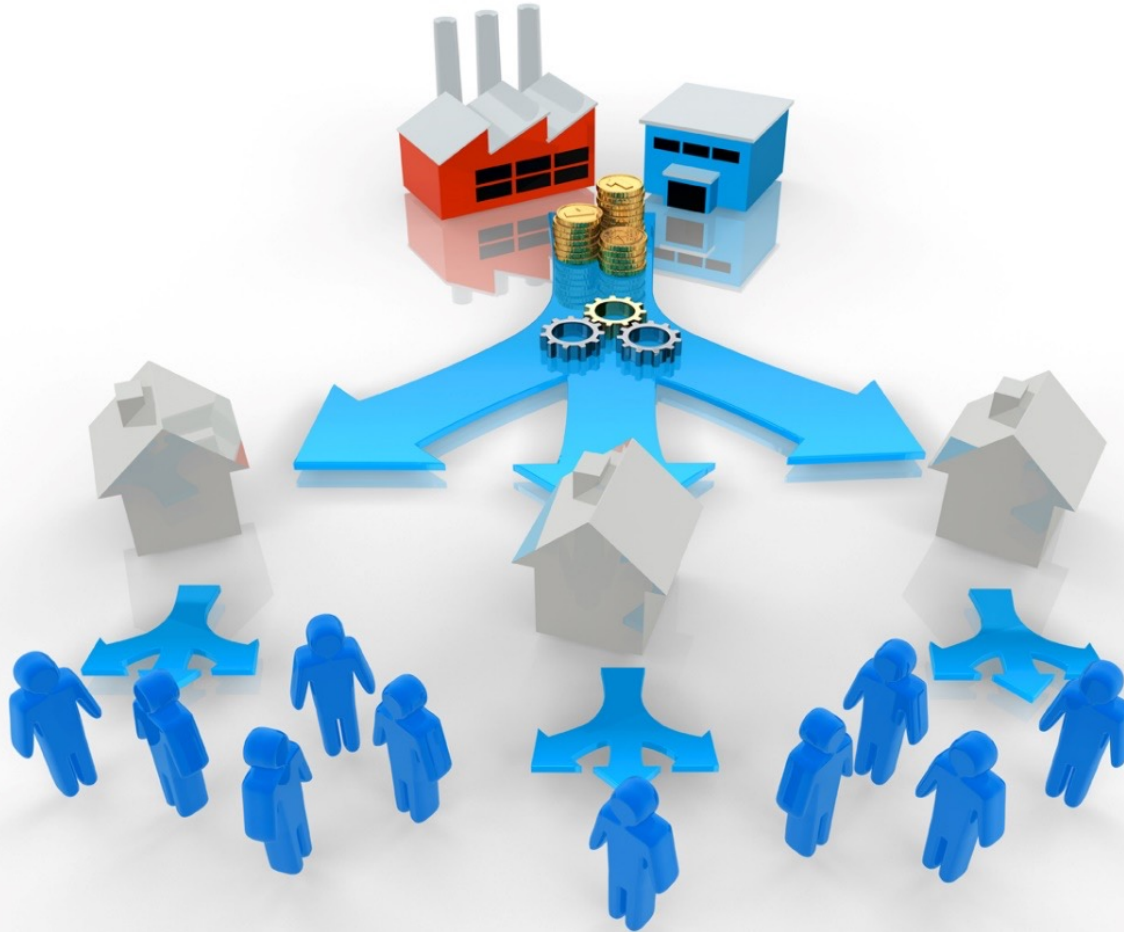
"Serving all your needs"

# Our way of thinking



# Services

dynamic supply chain

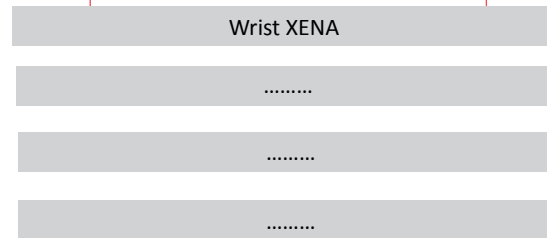


# Service Range

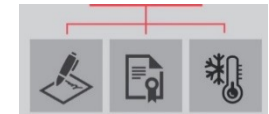
a combined solution



- Provisions Supply
- Beverages Supply
- Non-food Supply
- Resort supply
- Single point of contact
- Container Consolidation
- Business Intelligence (AXAPTA)
- Contract management
- Quality Control and Assurance
- Budget management
- Storing
- Global and Local Assortment



Wrist originates from company branch with 30 compaes...



Our way of thinking, values are uniform among all our branches

“Serving all your needs”

# Product Range

Wide assortment of products



## SELECTED SUPPLY

- ❖ Frozen Meats
- ❖ Dry Foods
- ❖ Alcoholic Beverages
- ❖ Processed Foods
- ❖ Canned Food

## STANDARD BRANDS

- ❖ Midfield
- ❖ Copocal
- ❖ Mara
- ❖ And more..



**Resort Supply**  
**Provisions Supply**  
**Beverage Supply**  
**Wide assortment of Items**

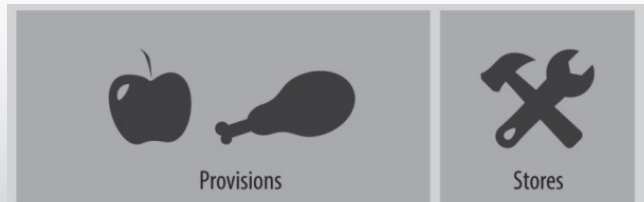


## FOOD & BEVERAGE SUPPLY

- ❖ Fresh Vegetables
- ❖ Other Meats and Poultry
- ❖ Essences
- ❖ And many more...

## NON FOOD SUPPLY

- ❖ Tableware
- ❖ Cutlery
- ❖ Glassware
- ❖ Lightning & accessories
- ❖ Spa appliances
- ❖ And many more....



“Serving all your needs”

# Product Range

selected assortment

## PROVISIONS

Frozen Meats  
Dry Foods  
Alcoholic Beverages  
Processed Foods  
Canned Food



Provisions

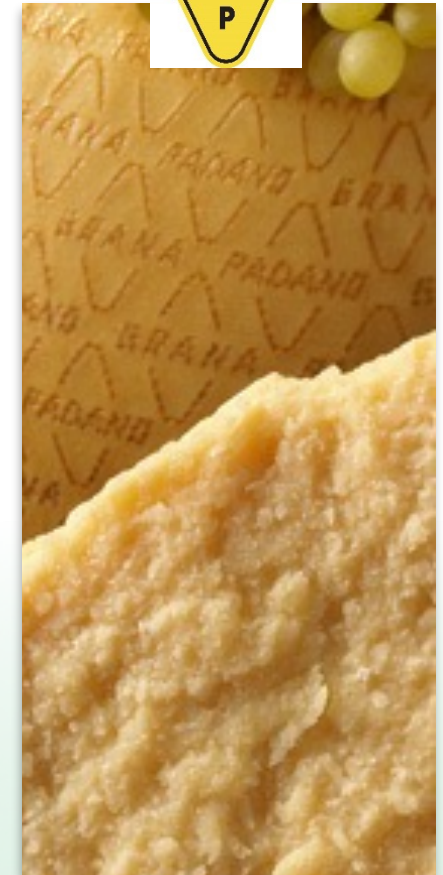


Stores



# Product Range

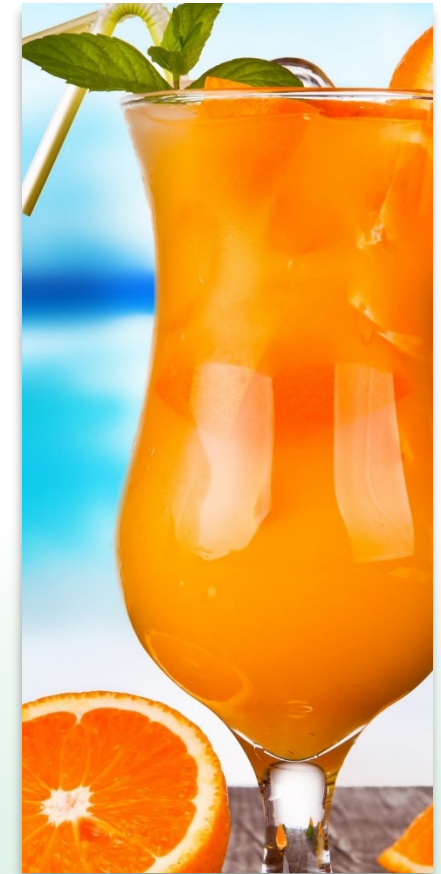
Standard Brands





# Product Range

Standard Brands



# Established Brands



# Product Range

wide assortment

## PROVISIONS

Fresh Meat  
Poultry  
Fruit and vegetables  
Dry Goods  
Frozen Goods  
Dairy products

Essences  
Beverages

Mini Bar replenishments  
And many more

## STORES

NON-FOOD

TECHNICAL

Tableware  
Cutlery  
Glassware  
Lightning & Accessories  
Spa Appliances  
Spareparts  
And many more...



Provisions



Stores



# Wrist Group

global footprint....



## Resort Supply

- UAE
- The Maldives
- Seychelles
- Mauritius
- Sri Lanka
- Oman
- Djibouti
- Saudi Arabia
- Tanzania
- Madagascar

# Meet our employees

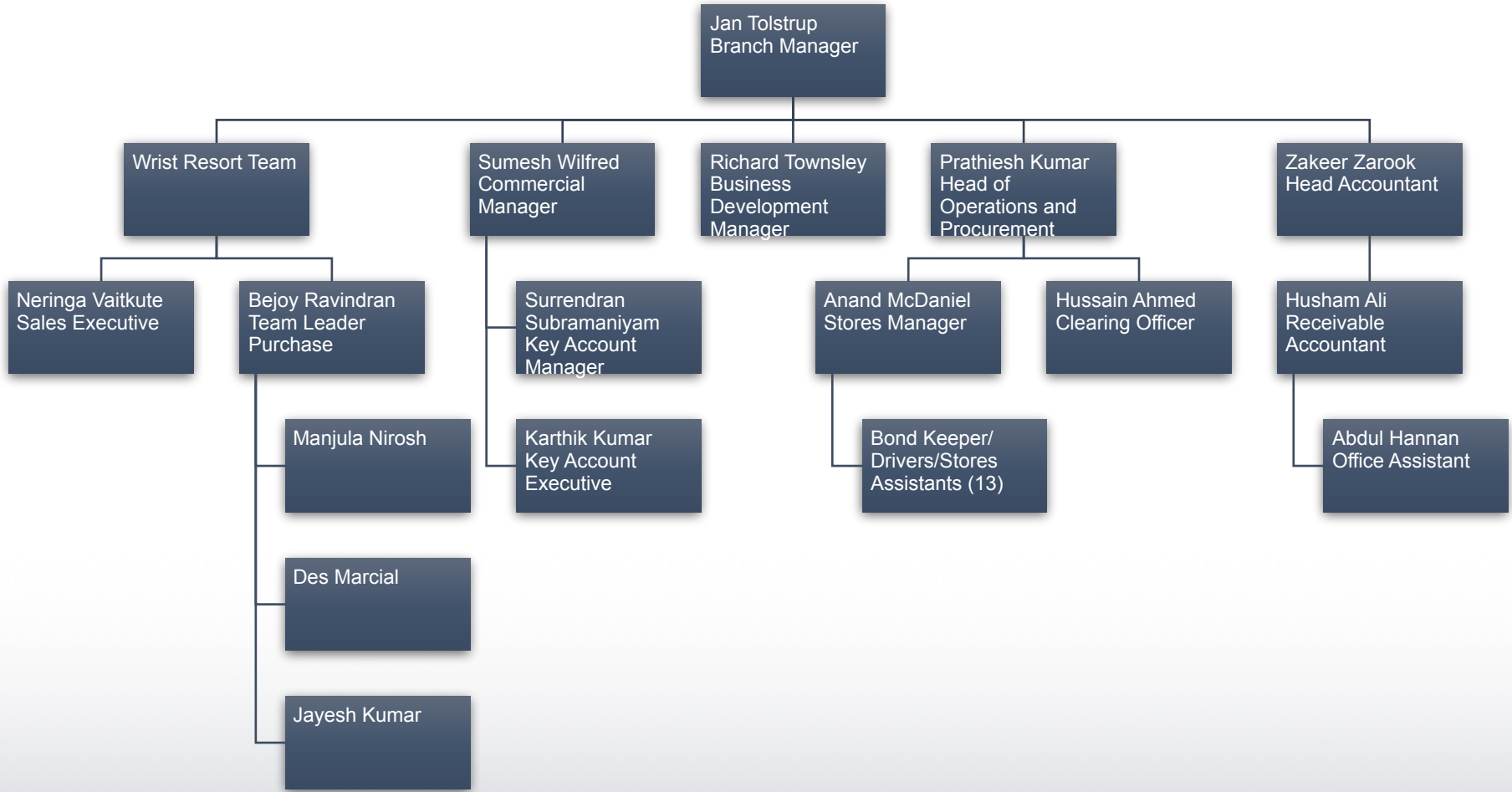
## Capabilities



- Experienced employees
- Strong business knowledge
- Strong Training Program
- Professionalism and skilled
- Efficiency
- All demands are top priority always

# Meet our employees

## The Branch Team



# Delivery Facts

Hotel and Resort Supply Branch

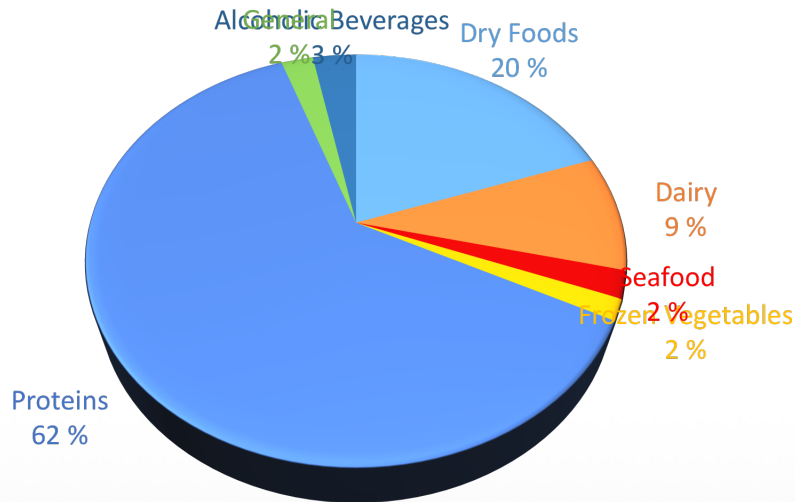


- **1,600 tons of chicken/cuts**  
- corresponding to 62 x 40ft containers
- **4.5 millions of eggs**  
- corresponding to 14 x 40ft containers
- **65,000 deliveries a year**  
- that is 7 deliveries per hour 24/7 all year round
- **180 different accounts** delivered to in 2013

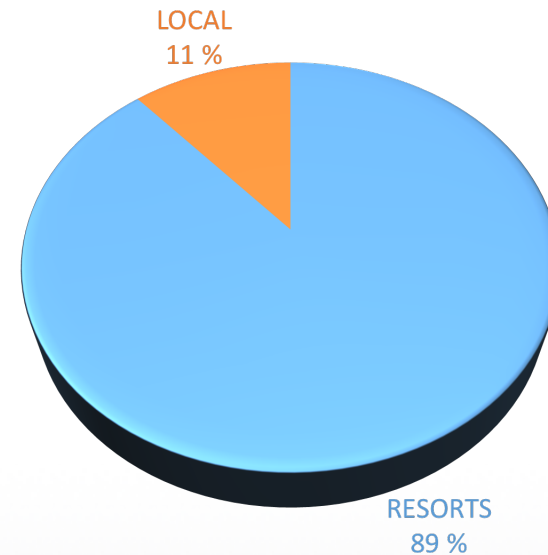
# Delivery Facts

## Hotel and Resort Supply Branch

Sales by product type



Market division





# Warehouse Management

State of the art facilities



- We stock just about everything – and deliver just about everywhere
- Our warehouse is HACCP approved and abides by the highest international health and safety standards.
- Accreditations - We pride ourselves to be certified with the ISO 22000-2005 by TUV-SUD Germany at July 2012

“Serving all your needs”

# Customer Profile



# Your trusted partner

What's in it for you



- Experienced Supplier
- Global presence – local excellence
- Economies of scale
- Accreditation
- Uniform quality and services
- Global frame agreements
- Building partnerships

# Your benefits

What's in it for you



- Food safety and Quality Assurance
- Fast response time (EDI)
- Volume scale prices
- 24/7 availability
- Promises delivered
- Budget Management
- Contract Management
- Transparency/reporting tools
- On-time delivery
- Consistency in products
- Brands from worldwide origins



**Thank you!**  
At your service...

**COSMOPOLITAN**  
*"where quality and service matters"*

**WRIST**  
RESORT SUPPLY